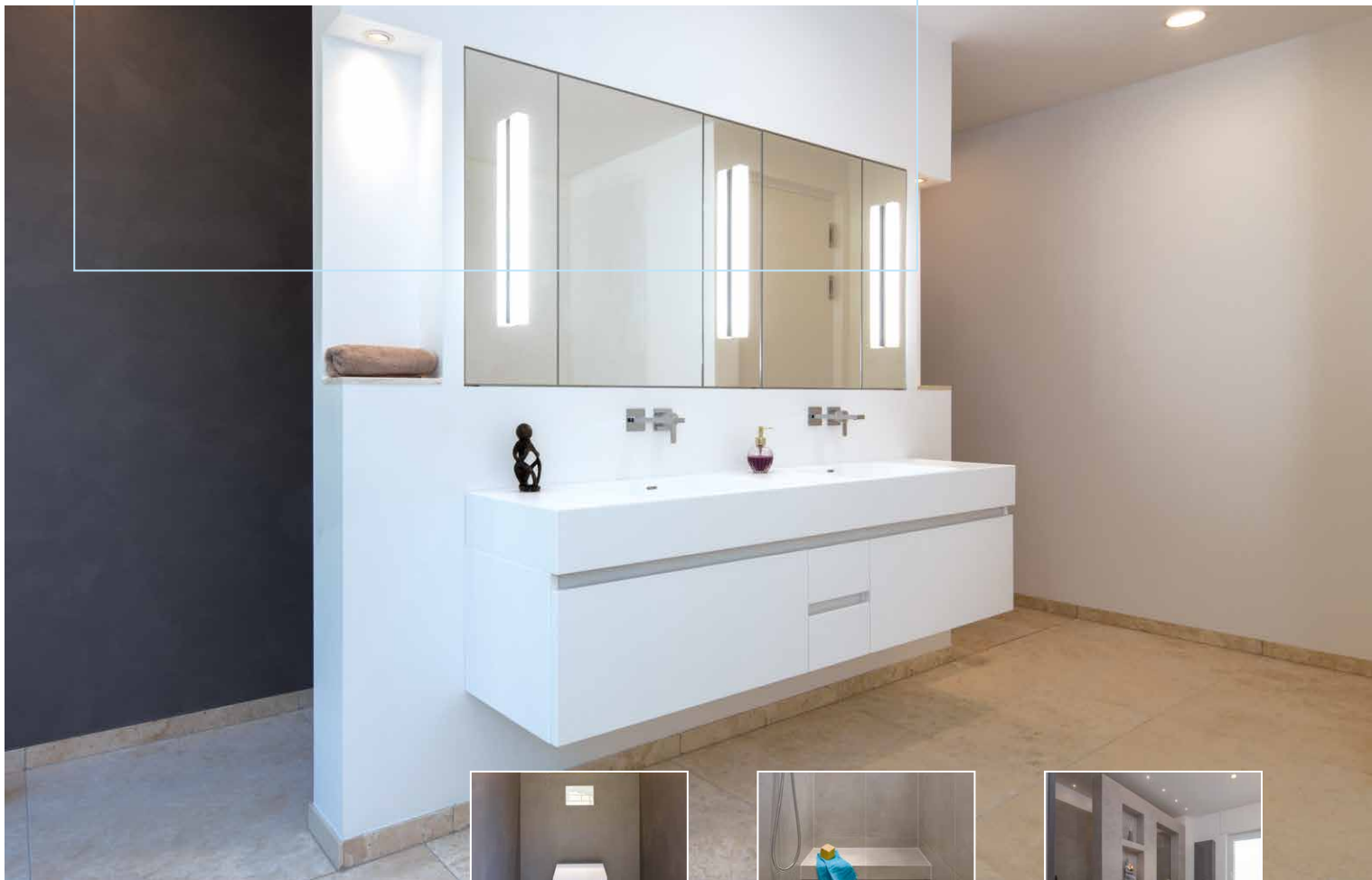
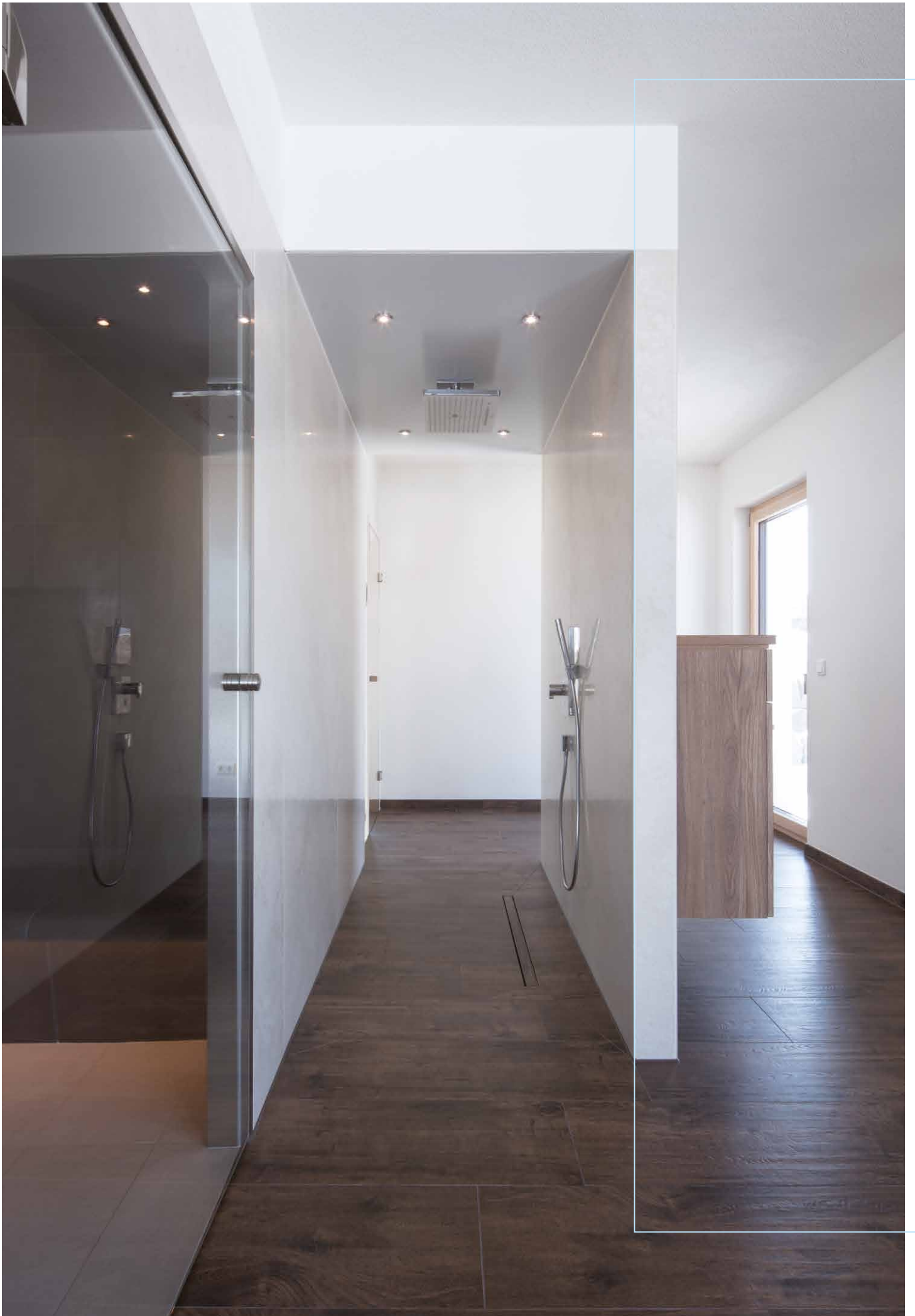


# Modular construction

Ready-to-assemble systems for designing and redeveloping wet rooms





# Individuality meets speed

## Ready-to-assemble system solutions for smart room concepts

With its modular system components, wedi creates brand new opportunities for designing individual, on-trend bathrooms and wet rooms. The light and at the same time enormously stable wedi modules allow for the realisation of almost anything from the floor to the ceiling and practically everything else in-between: free-standing or partially attached creative partitions, shower solutions, customised bathroom furniture or complete system solutions for spa and wellness areas for example.

Functional wall structures in a characteristic T-shape to mark out toilet, shower or washing areas are just as possible as a compact partition e.g. with a shower on one side and a wash stand on the other. A shower cubicle in a typical U-shape with ready-to-connect ceiling modules, including inset light spots, a rain shower or loud speakers, as well as completely free structures can be developed to suit any room and be delivered ready-to-assemble to the installation site.

Our individually made module components are always tested, load-bearing and 100 % watertight structures – easier, quicker and safer than any other conventional drywall designs. Each module is custom-made. The degree of prefabrication can be freely selected: from power cables and cold and warm water pipes built in at the factory and load-bearing reinforcements, cable ducts and empty conduits through to ready-to-use technical components and fittings. All custom-made items are assembled in the wedi factory and subjected to a thorough test before delivery.

wedi modular construction elements – the best way to build today.

# Not just simple in theory, but in practice too!

## Practical example: T module

The benefits of wedi modular construction elements as opposed to classic drywall installation are clearly shown in specific applications. In this example, the floor plan is to be optimised as part of a bathroom renovation. The owners specifically requested the toilet, shower and wash stand areas to be clearly separated from each other within the same room – but without any ceiling connections.

The interior design solution developed by wedi modular construction planners was a practical T-structure. The visually free-standing solution with one connection to the existing wall and the rest only bonded to the floor, is a tested, load-bearing structure built with modular components made from 100 % watertight XPS base material. The shower area, consists of a Fundo Riolito shower element enhanced by a Fundo Discreto optical wall drain, offers a generous seating and storage space with the inclusion of a wedi Sanoasa bench and a practical Sanwell Niche.



Plan of the toilet area



Plan of the shower area



Plan of the wash area



In this case, the T module consists of three parts which were made ready-to-assemble in the factory and could be built on site in less than an hour. All the required connectors, pipework and flush-mounted fittings have already been installed at the factory. Likewise, the empty conduits and connector sockets were added beforehand. All installations were connected on site via an inspection opening. Practical and visually attractive details such as a niche and a bench in the shower area were also prefabricated. Furthermore, attachments for the wash stand and an optional shower door were integrated for optimal load transfer. Due to the high degree of prefabrication, the T module is an enormous time saver on site. It would take two workmen up to three days to build the same shower using conventional drywall designs.

The result: an individual and extravagant bathroom with a generous showering area, a stylish double wash basin and practical storage space – custom-made and put together in almost no time thanks to wedi's modular design.

## Increase predictability – minimise risks

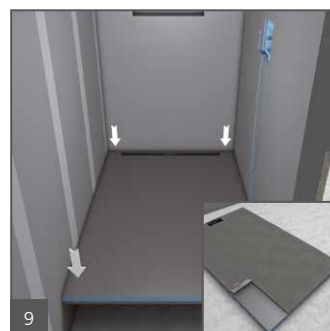
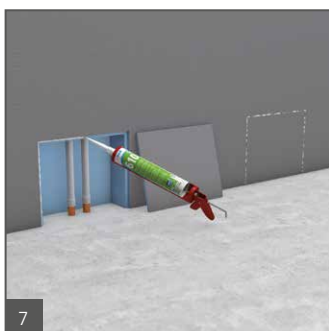
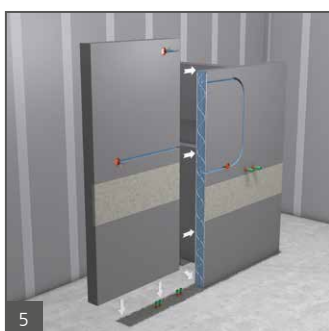
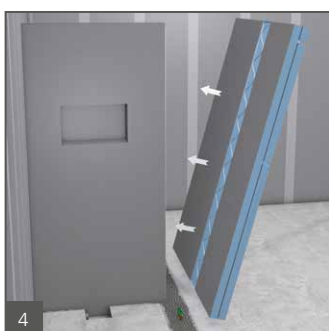
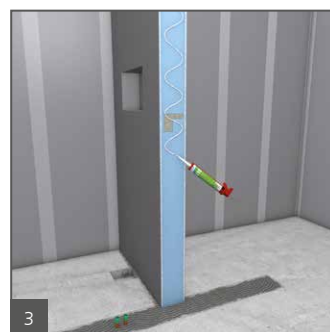
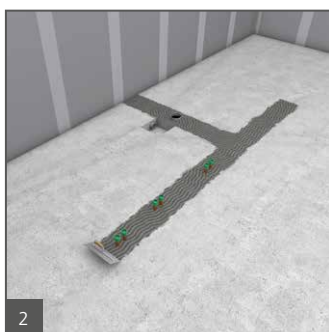
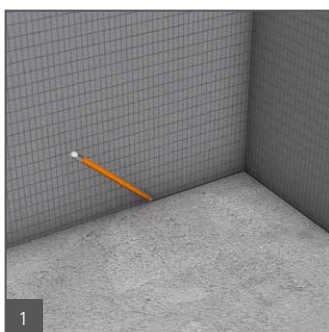
With larger construction projects in both the commercial and private sectors, architects, workers and clients are often face tight schedules. Thanks to the high degree of prefabrication and an unbeatably quick installation time, wedi modular construction elements offer maximum reliability in scheduling a construction project. Furthermore, the 100 % watertight XPS base material and all fully sealed and ready-to-install components provide the system with unparalleled security.

Significantly fewer steps are required to install a wedi modular design than a common masonry or drywall design. After calibrating the structure to wall/floor surfaces, elements need to be aligned and fixed with tile adhesive (wedi 320). The system adhesive wedi 610 then used for waterproof bonding of wall elements to existing surfaces and for adhesion and sealing between wedi elements. The transitions between the elements are furnished with self-adhesive joint reinforcement tape. The fully-sealed structure is now ready!

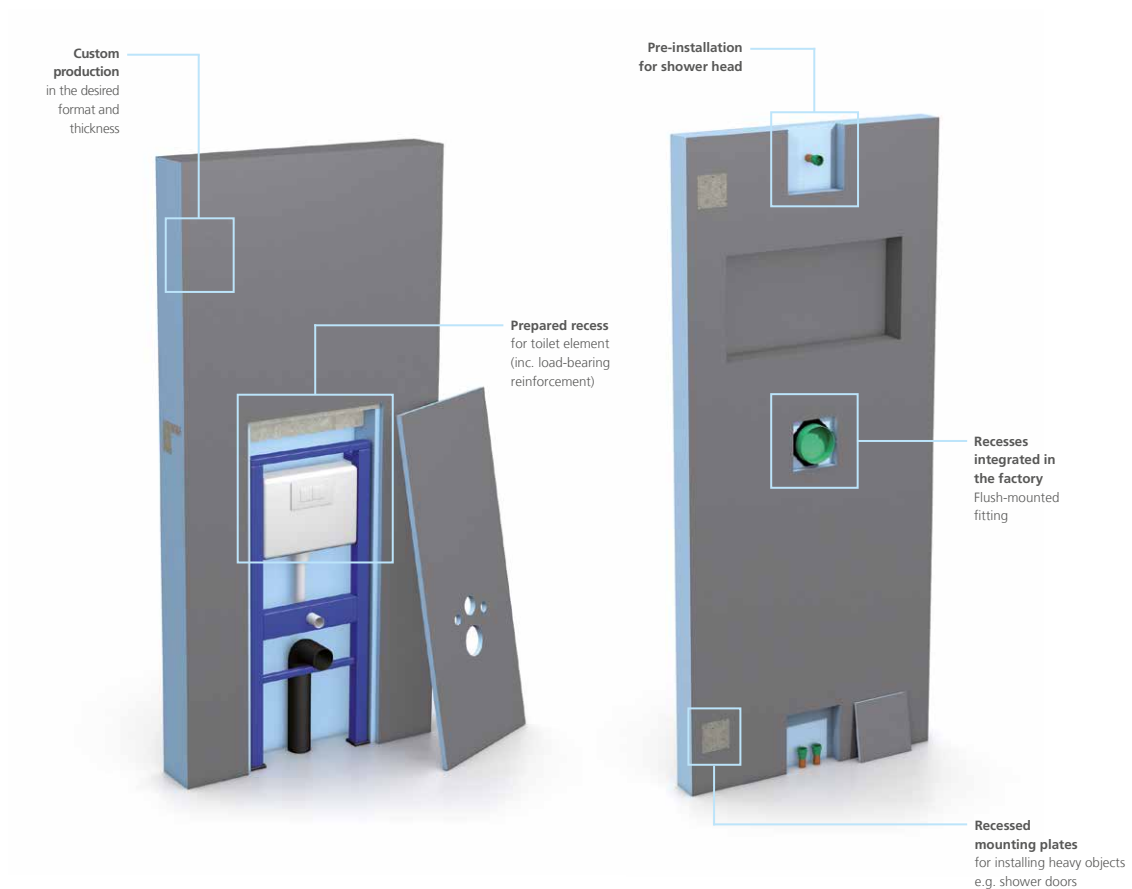
The planned installations can then be completed: the toilet element can be installed in the recess prepared for it and the inspection opening can be sealed with a wedi building board. The drain is then installed for the shower area, the Fundo shower element is put in place and sealed to the surface of the wall. In most cases, a prefabricated bench is also added to the shower area for comfort and convenience. The system adhesive wedi 610 is once again used here. The entire module, including the shower area, can be assembled in less than three hours. The structure can now be tiled, plastered or furnished with design surfaces.



## wedi T modul ■ Installation example



# Prefabrication saves time – and money too






Thanks to the high degree of prefabrication of wedi modular construction elements, many time-consuming and risky steps during bathroom and wet room design are omitted. Even complex designs such as round showers or individual free-forms don't affect the installation time due to the versatility of wedi modules. An entire bathroom, including a shower area and wash basin, can be done in just a day – wedi makes it possible.



## What's in it for you: save up to 90 % in time

When it comes to building walls, lots of professionals rely on common methods – from classic masonry and conventional drywall designs through to building walls using industrially prefabricated registers and system construction walls. In direct comparison, the wedi modular construction has clear benefits.

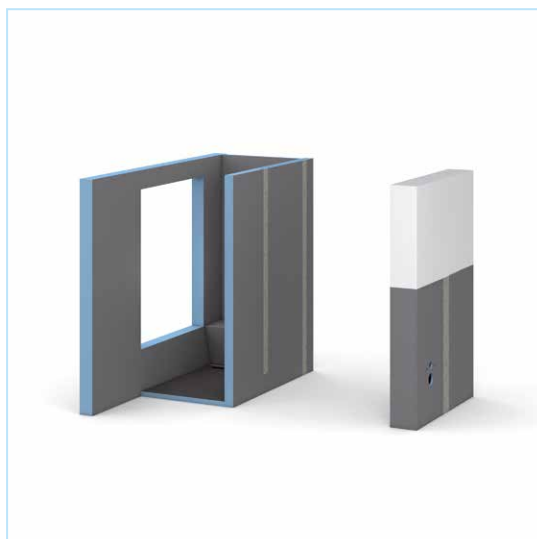
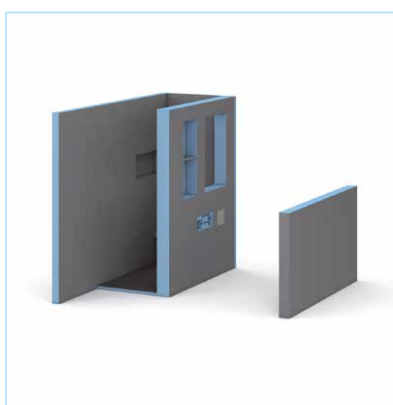
Depending on the installation situation, you'll save up to 90 % in time. The wedi solution is already fully sealed. You can start tiling the very next day without any extra preparation. At the same time, a wedi modular construction avoids the typical communication problems between drywall builders, installers tilers and electricians.

Comparison: conventional construction including sealing and installation vs. wedi modular construction				
<b>Product presentation</b>				
<b>Products</b>	wedi modular construction elements	Masonry	Drywall installation	Installation walls including panelling
<b>Labour hours on the building site</b>	<b>0.5 h</b>	<b>22 h</b>	<b>10 h</b>	<b>9 h</b>
<b>People</b>	<b>1 person</b>	<b>2 people</b>	<b>2 people</b>	<b>2 people</b>
<b>Wait time and drying time</b>	<b>24 h</b>	<b>120 h</b>	<b>24 h</b>	<b>24 h</b>
<b>Explanation</b>	wedi 610 and wedi 320 need to dry through	Drying time after building Drying time after plastering Apply sealing and drying	Sealing can very probably only be applied on the day after installation and needs to then dry for 24 hrs	Sealing must dry

# Interior design redefined

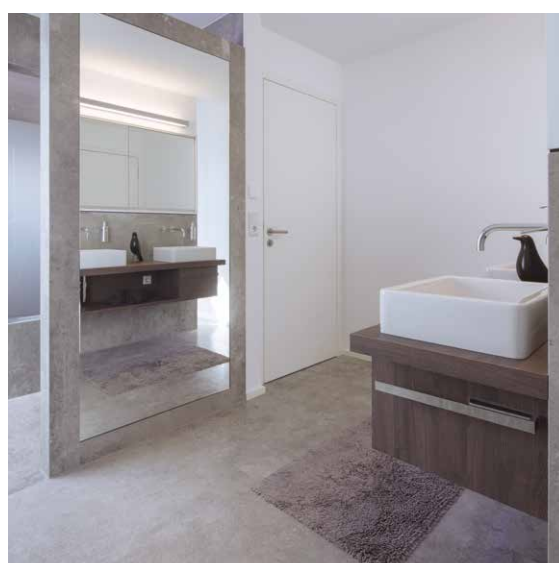
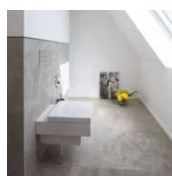
## Shower cubicle and the attached wall module

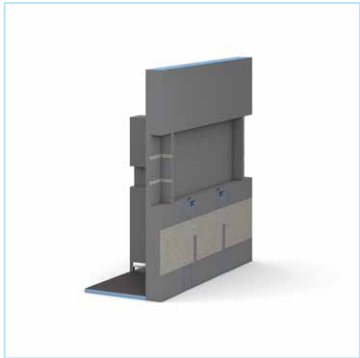
Practical niches, technical prefabs and a partition wall with a glass element connected to the floor and wall – this lets sunlight in the shower area – as requested by the owner.



## Shower cubicle and a free-standing partition wall

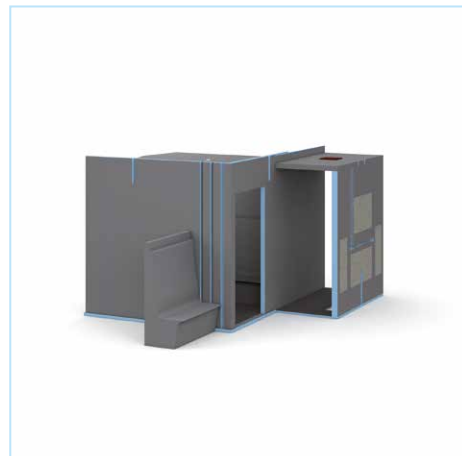
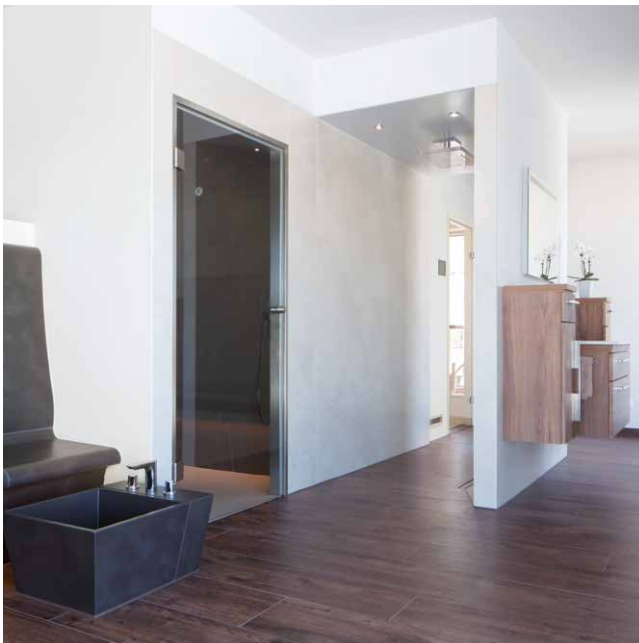
The owner put extra emphasis on free-standing elements, comfortable seating and a big wall mirror.





**T module used on three sides**

A modular system for toilet, shower and wash basin inc. all technical components and reinforcements – the owners couldn't get over their amazement.



**Steam bath, bench and a shower cubicle**

Planned and implemented – a multi-sensory shower, a steam bath and foot basins – a private wellness area that's quick to install.



- Australia
- Austria
- Belgium
- Bosnia Herzegovina
- Canada
- Croatia
- Czech Republic

- Denmark
- Estonia
- Finland
- France
- Germany
- Great Britain
- Greece

- Hungary
- Iceland
- Ireland
- Italy
- Latvia
- Lithuania
- Luxembourg

- Netherlands
- Norway
- Poland
- Portugal
- Romania
- Russia
- Serbia

- Slovenia
- Spain
- Sweden
- Switzerland
- Turkey
- Ukraine
- USA



**wedi GmbH**

Hollefeldstraße 51  
48282 Emsdetten  
Germany

Telefon +49 2572 156-0  
Telefax +49 2572 156-133

info@wedi.de  
www.wedi.eu

