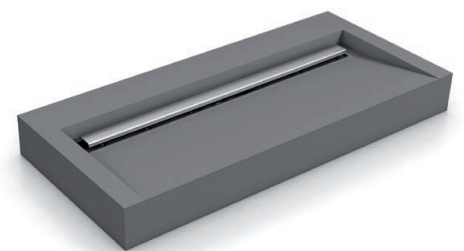




wedi Sanbath floating wash basin with channel

Stylish, on-trend solution with linear drainage

The new, robust wash basin is custom-made to suit all requirements. The width can be selected with millimetre precision between 500 and 1.300 mm and there are four different channel lengths (300, 700, 800 and 900 mm) available to choose from. In addition, the type of channel cover (standard, exclusive or tileable) can also be specified to suit.



Cut-to-size and prepare the wedi building board for connections, then use wedi 610 to direct bond it to the installation frame.



Place the Sanbath wash basin on the threaded rods previously fixed to the installation frame – if applicable with the sanitary kit on the back.



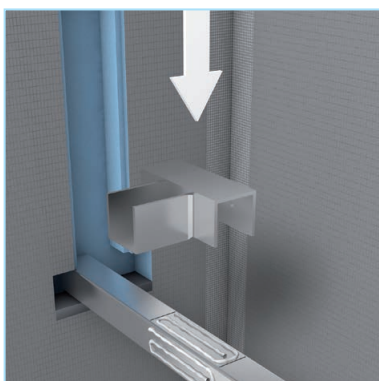
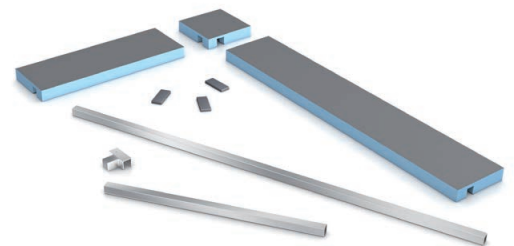
Screw the wash basin in tightly at the bottom, then tile it and you are done!



wedi Sanoasa floating bench

As a straight or a corner structure

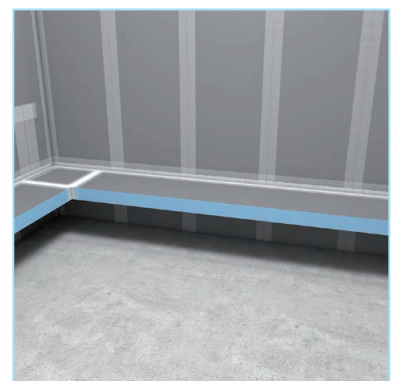
The spacious bench is attached on three sides without any substructure thus designed to be floating. The special bit: the length can be crafted with millimetre precision between 1.500 and 3.000 mm to fit the wall construction. For a corner design, straight bench parts are simply positioned at right angles and connected to each other with a prefabricated corner element. Tailor-made stainless-steel profiles provide the required stability and for more comfort, a hot-water heating system can be integrated into the structure.



Fit stainless-steel profiles and fix in place with wedi 610 and screws if necessary.



Use wedi 610 to seal/bond all elements to profiles, to each other and to the walls.



After sealing with wedi 610, apply joint reinforcement tape to all grooves and joints. For application in a steam bath, use the wedi Tools sealing tape and an epoxy resin tile adhesive.